

FC2 FEMALE CONDOM

WHAT is the FC2 Female Condom?

It is the second-generation female condom which is a soft, smooth, strong and safe condom made from nitrile, which is worn inside the vagina. It is a transparent sheath that is about 17 centimeters or about 6.5 inches long which lines the walls of the vagina, allowing the penis to move freely inside the condom during sex.

HOW is FC2 worn?

FC2 has an inner and an outer ring. The inner ring is used to insert FC2 and to keep the condom in place during sex. The outer ring remains outside the vagina. Just like a male condom, the FC2 is a barrier to sperm after ejaculation. The difference is that the female condom is the only available female-controlled method of protection from unplanned pregnancy and STIs, including HIV and Zika.

WHY use FC2?

FC2 provides pleasure and protection from pregnancy and STIs in one package. It does not interfere with the sex act as insertion can be in advance and removal can be delayed after sex.

For anybody

- FC2 fits all women and men regardless of their size or shape.
- FC2 is non-allergenic; it is suitable for men and women who have an allergy or sensitivity to latex.

In control

- You don't need to see a doctor before you start using female condoms.
- As opposed to other contraceptives, the FC2 doesn't affect your body. It is non-hormonal, hence has no side-effects.
- FC2 provides extra protection against STIs by covering the woman's external sex organs and the base of the penis.

Pleasure-enhancing

- FC2 is made from nitrile, which means that – as opposed to latex condoms – it can be used in combination with oil-, water-, or silicone-based lubricants without affecting its safety.
- FC2 heats up to body temperature, making sex feel warm and natural.
- FC2 is lubricated with a high-quality silicone-based lubricant.
- For some users, the two rings can provide extra stimulation, increasing pleasure during sex.

WHEN to insert FC2?

- FC2 can be inserted either a few hours or just before sex.
- The penis doesn't need to be erect to use FC2 and doesn't have to be withdrawn immediately after sex.

WHO can use FC2?

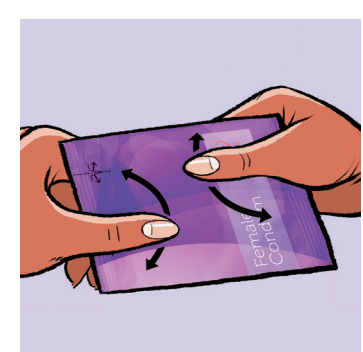
FC2 can be used by any woman or man who wishes to have safe sex.

In addition, FC2 is suitable for:

- Women who are menstruating/pregnant/(pre-or post) menopausal.
- Women who have recently given birth/had a hysterectomy.
- FC2 can be used with the pill, injections, intrauterine device (IUD), implants, post sterilization and post vasectomy to provide protection against STIs, including HIV and Zika.



HOW TO USE FC2?



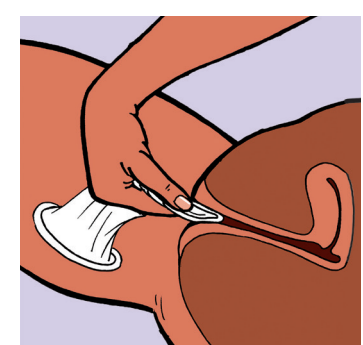
Spread the lubricant



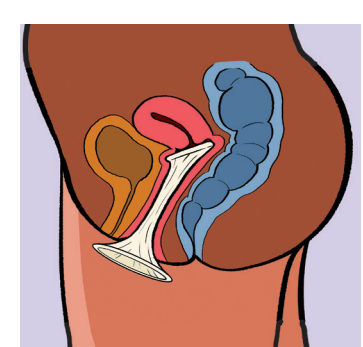
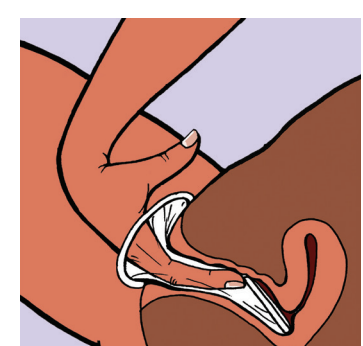
Open the package



Hold and squeeze inner ring



Insert the female condom



You are ready to have safe sex



Want to learn more?

www.fc2femalecondom.com | info@fc2femalecondom.com |
f @FemaleCondomFC2 | t @FC2FemaleCondom | v FC2FemaleCondom